

Replace to Daly BMS

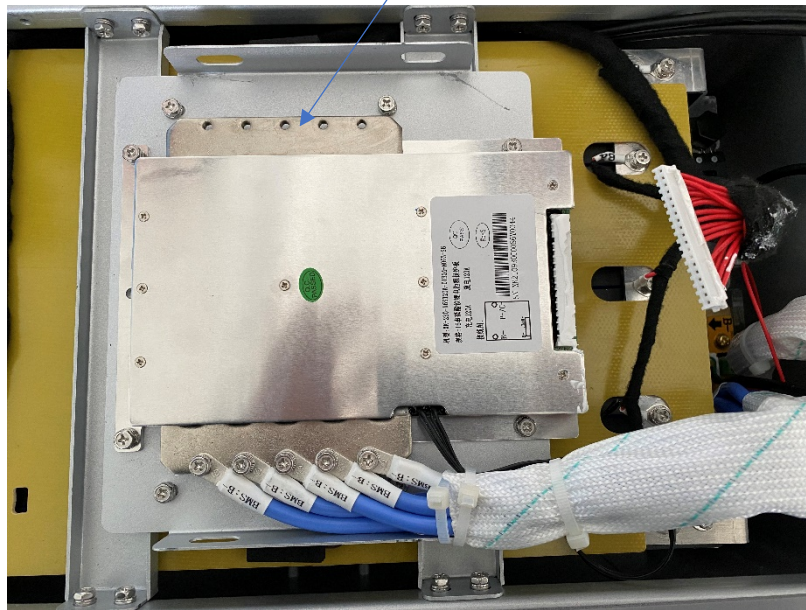
1. Open the lid of battery pack



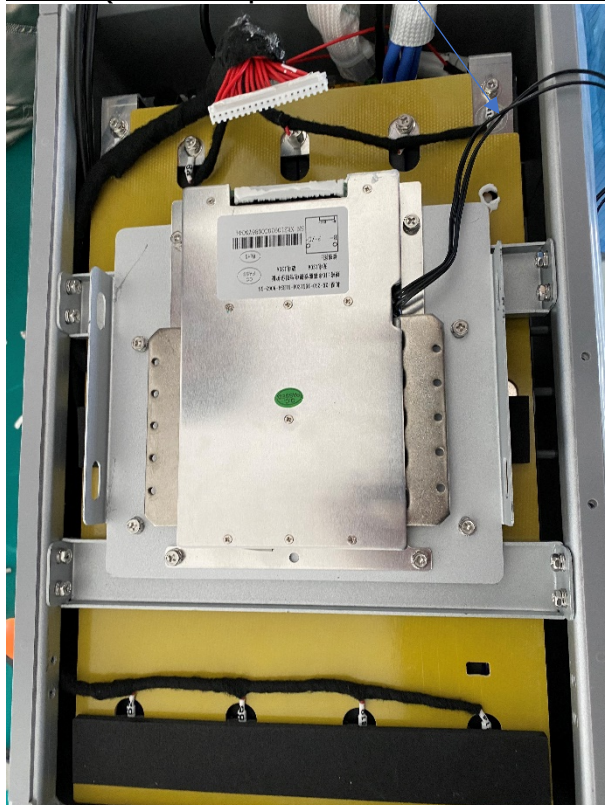
2. Unplug the cell volt connector from XK BMS



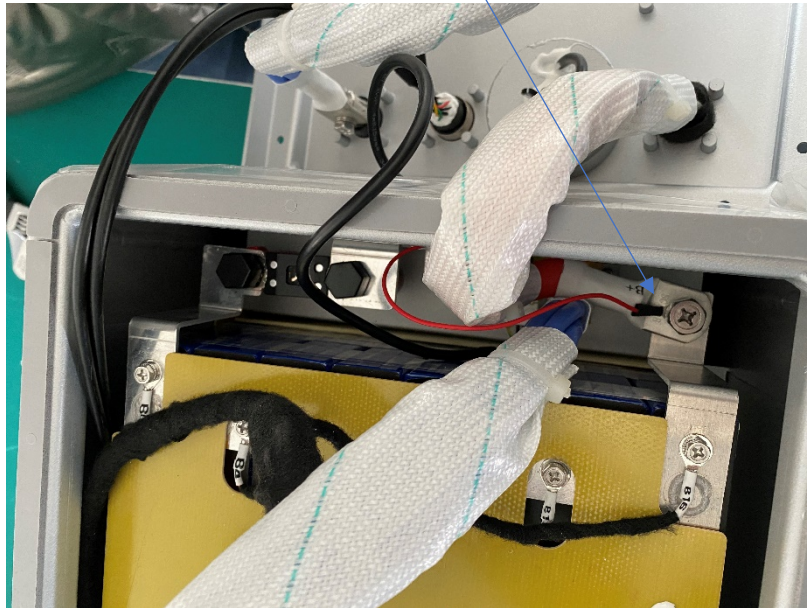
3. Take off power cable from the P- Port



4. Take out the temperature sensor. must wrap the terminal of power cable (from P- port of BMS in last step) to avoid short circuit.



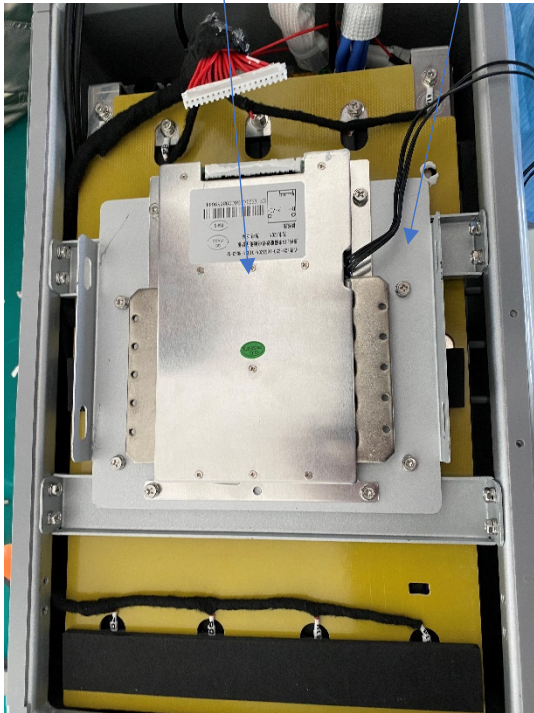
5. Take off the power cable from positive pole of cell pack.



6. Take off two connectors from the current sensor unit.
Remove the silicone glue on connectors.



7. take off BMS and BMS support frame.



8. Take off Cell pack pressing frame.



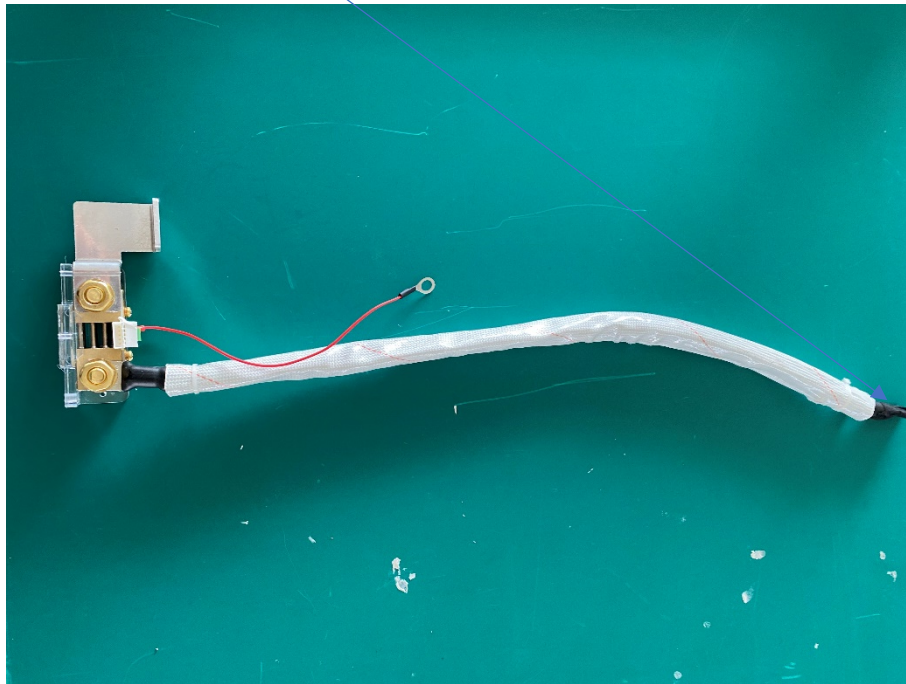
9. Take off current sensor unit.



10. take off the power cables from current sensor unit.



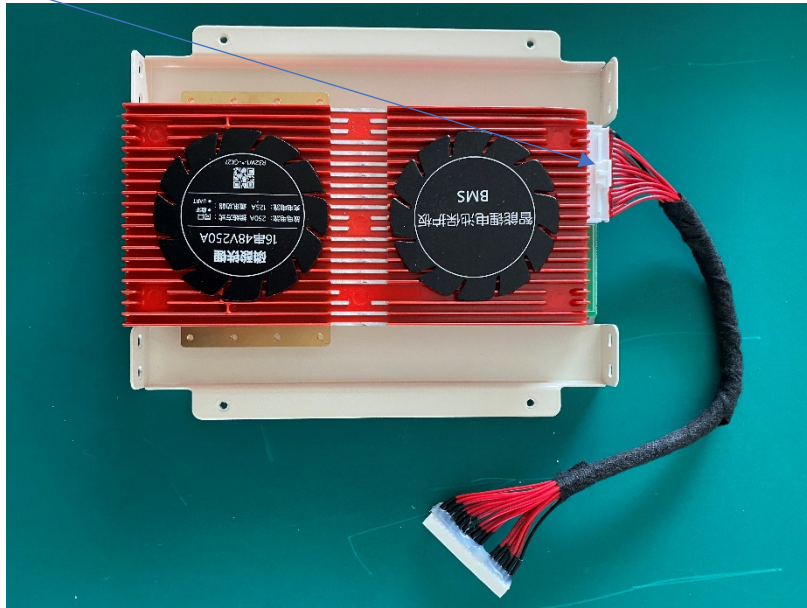
11. Install new B- power cable, which is the longer one, another end should be well wrapped to avoid short circuit.



12. Install Daly BMS support frame with M3*8 screw, please notice the installation direction to leave right space for connector.



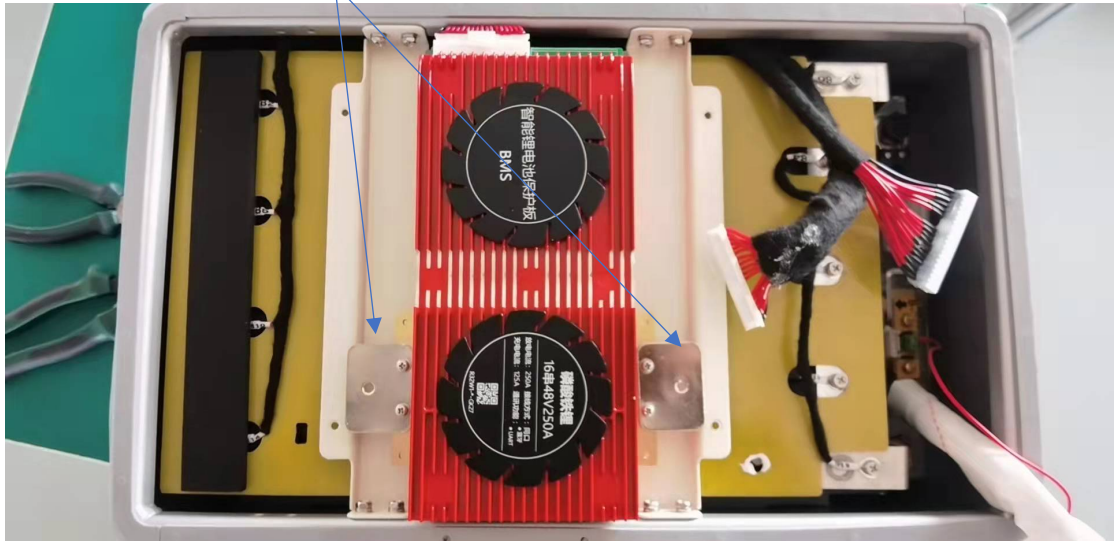
13. Plug in the cell volt wire connector, wrap the cell volt wires.



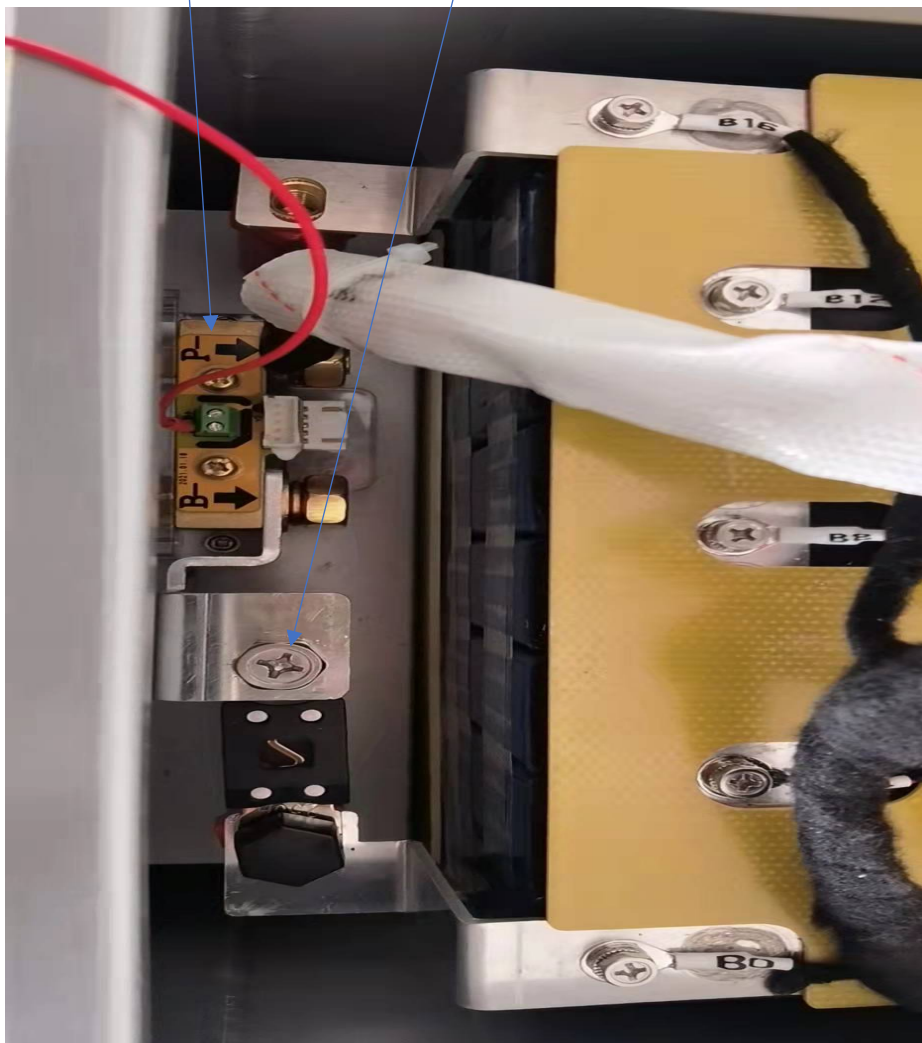
14. Install Daly BMS to metal case, please note the cell volt wire connector should be go through under the support frame.



14. Install copper busbar for power cables (M3*10 screws)



15. Install current sensor and fuse unit.



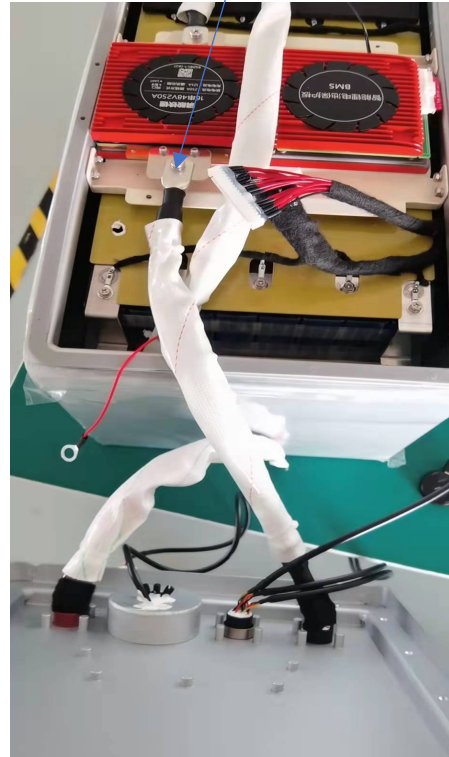
16. Bring the B- power cable from current sensor, connect to the B- of BMS, using M5*10 screws. Please place the new seal strip around the case. (This power cable will go through center of cooling pad of BMS, please use tape to fix it.)



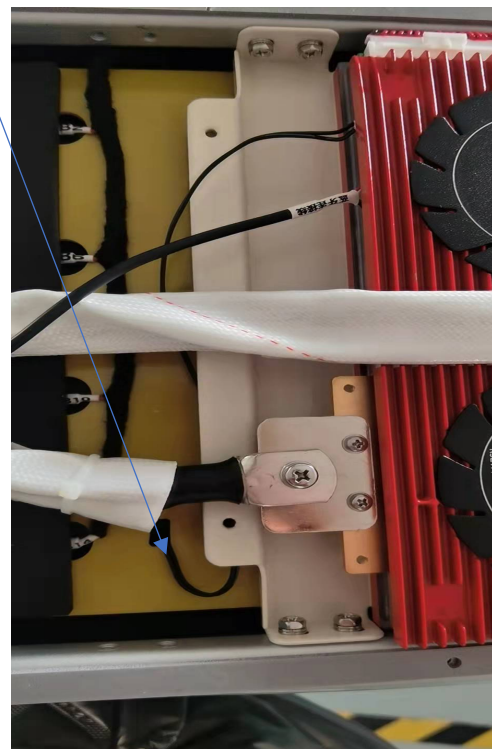
17. Replace old power cable with new cable (the short one)



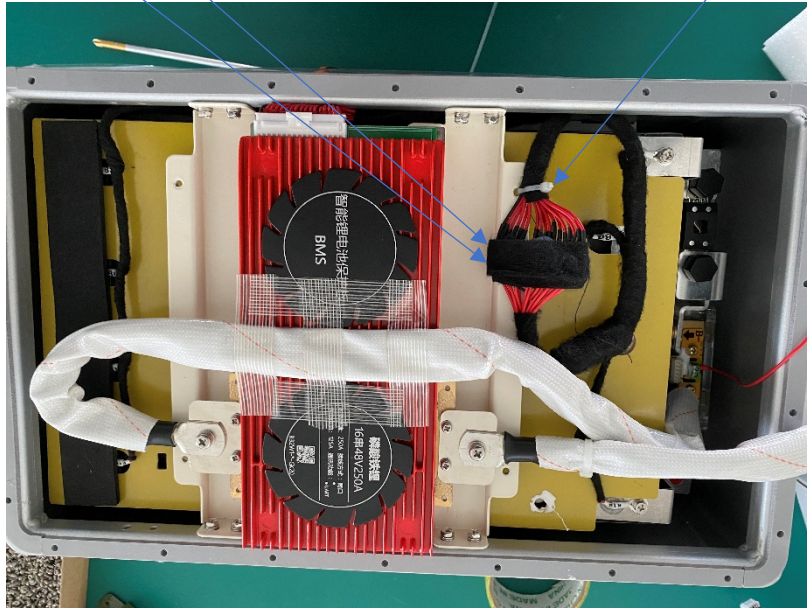
18. Connect the positive cable from lid to the positive pole of cell pack. Connect the negative cable from lid to the P- of BMS, using M5*10 screws.



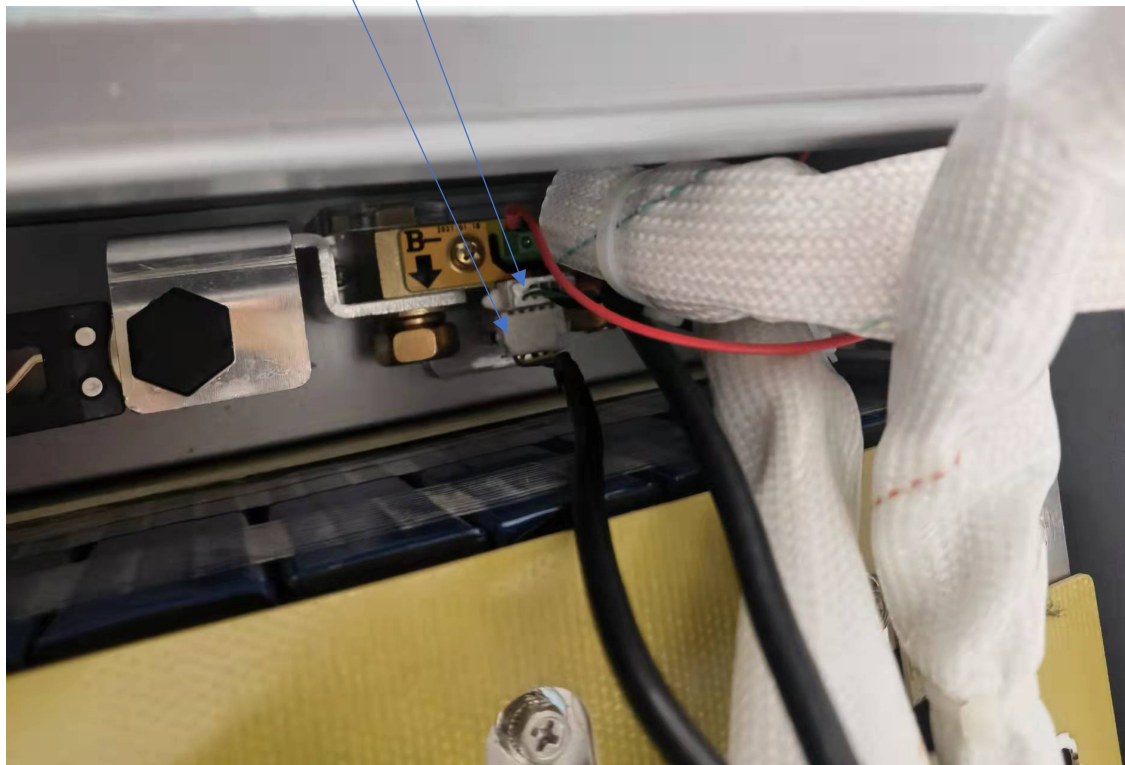
19. Fix the Bluetooth and temperature sensor



20. Connect new cell volt connector to old cell volt connector, wrap it totally, then fix them by ribbons.



21. Connect two connectors to current sensor, use glue to fix it.



21. Well arrange the wires and power cables, close the lid.

